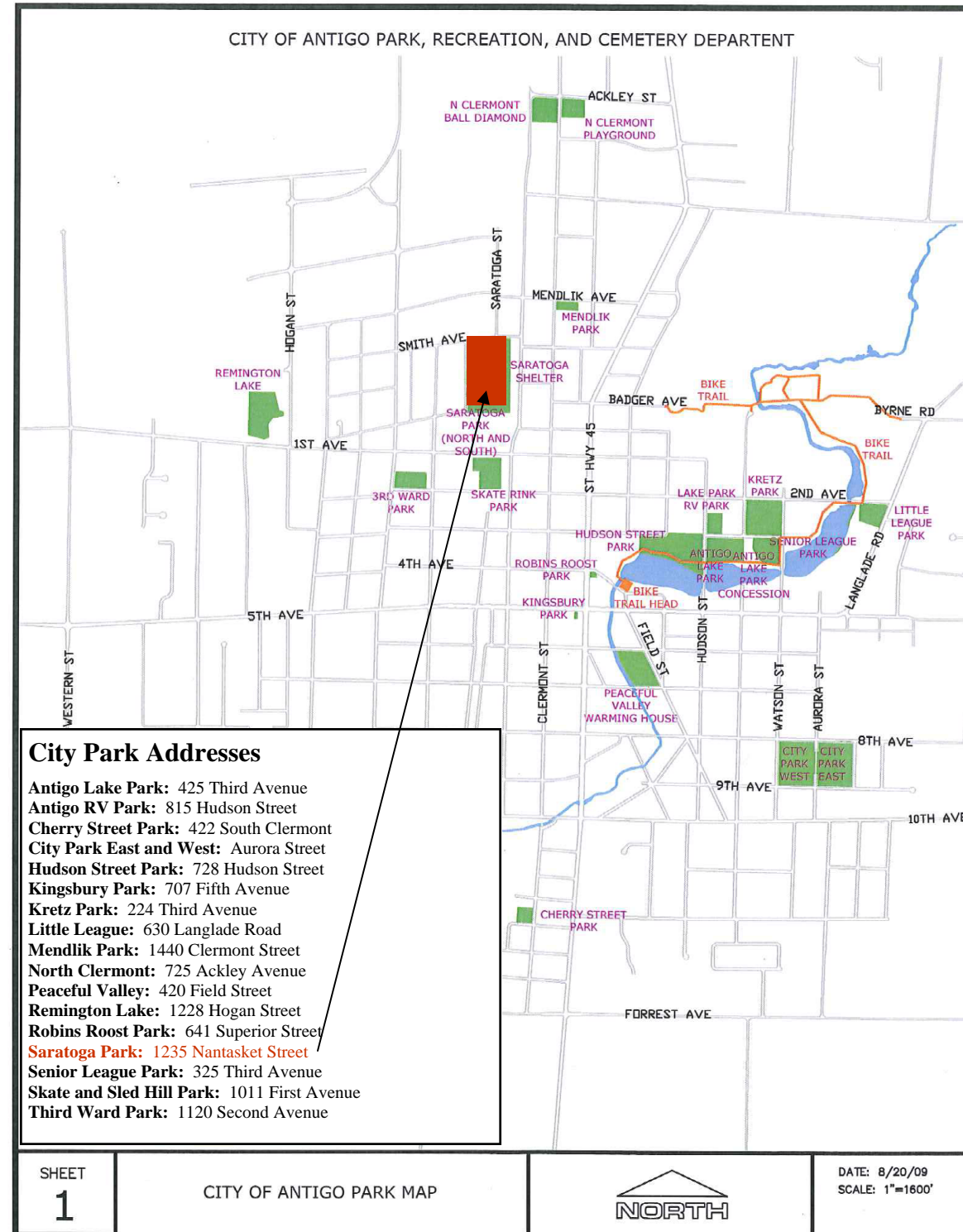


Saratoga Park Shelter

1235 Nantasket Street
Antigo, WI 54409



www.antigo-city.org



Reservation Policies and Fees

Shelters may be reserved by the public for family, social, or community events.

Fees

The cost is \$40.00 per day for residents and \$80.00 per day for non-residents. Also, there is a **minimum fee of \$100.00 for non-emergency call-outs** to the Park and Recreation staff after hours.

Dates/Season

Reservations may be made from May 1 through October 1, and up to one year in advance of the date you are requesting the reservation.

Availability

Please contact us to check on availability at 715. 623.3633 extension - 150.

Reservations

We will hold a reservation request for five business days. If we have not received the full shelter reservation payment at the end of five business days, you will forfeit your reservation.

Forms and Payment

We require a completed reservation form along with the payment and any other special permits required for the event.

Refunds

A refund will only be considered ninety (90) days prior to the event, a 25% administrative refund processing fee will be assessed.

Contact Information

If you are interested in reserving a shelter, please contact the City of Antigo Parks, Recreation and Cemetery Department at the following number: 715.623.3633 extension - 150. You may also direct any comments, questions, or concerns to the following e-mail address: srepp@antigo-city.org.

Website

A shelter availability calendar is also available on our website: www.antigo-city.org

Saratoga Park Amenities

Saratoga Park was developed through a Wisconsin Stewardship ADLP Grant (1997-2001)

PARK LOCATION: 1235 Nantasket Street, between Nantasket Street, Smith Avenue and Edison Street.

SHELTER LOCATION: South of the soccer field and west of the ball diamonds; adjacent to the parking area.

ACREAGE: 9.16 acres

SHELTER AMENITIES:

Grills: Two grills located near east edge of shelter concrete pad

Electric: Eight electrical outlets are available and operate on four 20 amp circuits

Lighting: Shelter lighting is operated by a dusk to dawn photo sensor

Picnic Tables: Up to 12 picnic tables fit in the covered shelter area

Restrooms

Large Garbage Cans

Dimensions of covered shelter area:
32'4" x 28'2"

PARK AMENITIES:

Playground Equipment: Located north of the shelter

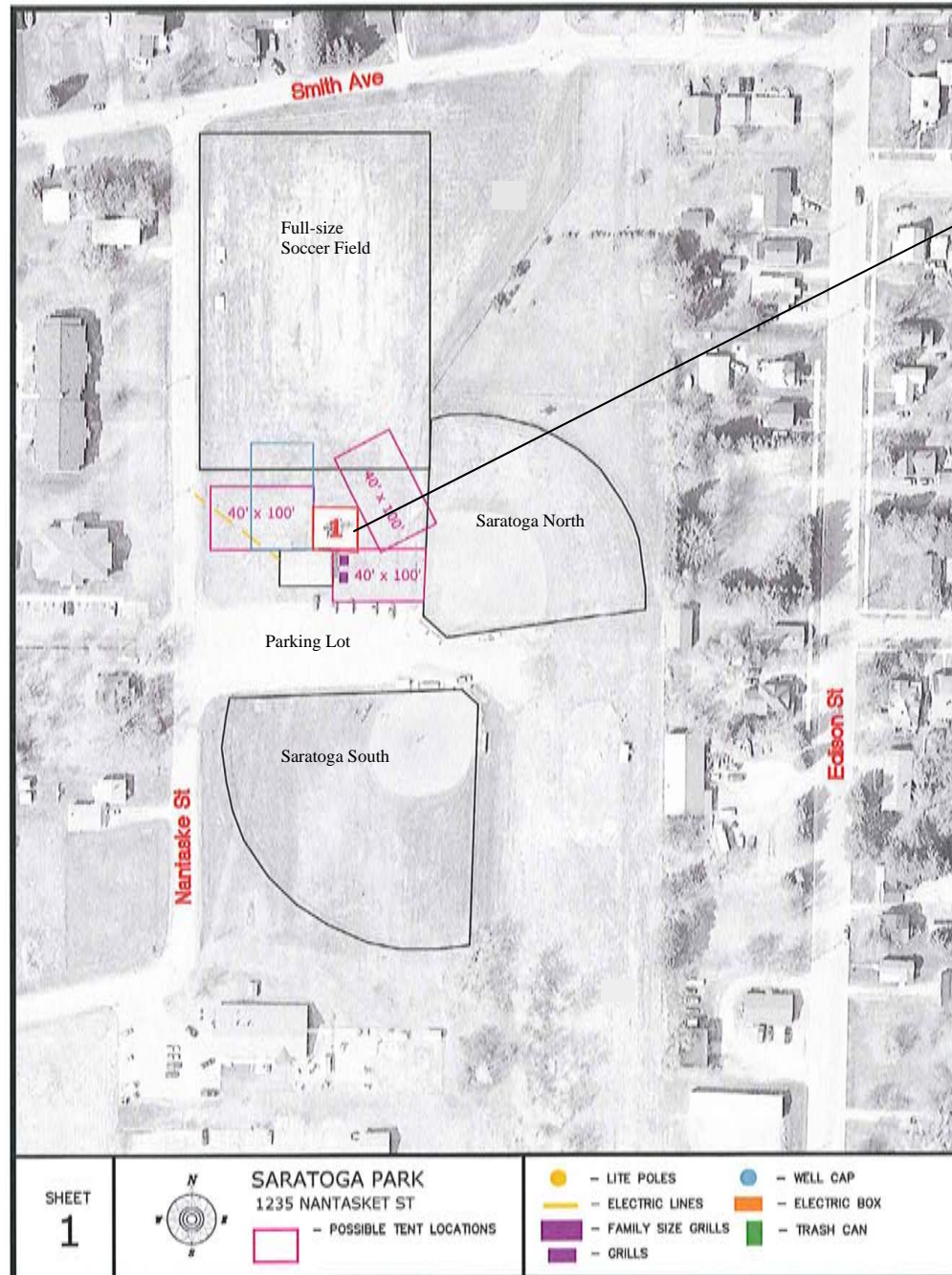
Ball Diamonds: Two ball diamonds (Saratoga North and South) with dugouts and bleachers

Soccer Field: One full size soccer field with bleachers

Parking: Large gravel parking area to the south of the shelter; on-street parking is also available.

Temporary Tent Sites: There are several areas to place temporary tents

Saratoga Park Aerial Photo



Saratoga Playground Equipment



Park Policies and Procedures

- Park Hours: 7:30 am - Dusk, unless you have a valid park facility reservation.
- Shelter Hours: 7:30 am - Dusk
 - Note: The City of Antigo is not responsible for any personal items left after closing hours.
- Only City of Antigo authorized vehicles are allowed in the park. Other vehicles entering the park for the purpose of hauling food, refreshments, etc. to the shelters are subject to fine, unless stated otherwise by the Park and Recreation Supervisor.
- Noise levels from crowds, musical instruments, stereos, etc., must be kept to a moderate level.
- Nails, tacks, etc. are not to be used in or on the shelter, facilities or trees. If tape or string is used it must be removed.
- No park equipment, benches, seats or tables may be moved unless authorized by the Park, Cemetery and Recreation Department.
- If you are planning on having an event or party tent requiring stakes it is your responsibility to contact Diggers Hotline (1-800-242-8511) prior to the event.
- All persons using a park shelter or ball field will relinquish their use to the holder of a facility reservation form.
- Glass beverage bottles or glass containers of any kind are not allowed in our parks for the safety of those utilizing our facilities.
- Fires must be contained within grills and shall be used only in designated picnic areas. Coals must be thoroughly extinguished to prevent fire or damage to any park property.
- Camping in all city parks is prohibited, except in the city campground, unless prior authorization by the common council is granted for a special event permit and the appropriate permits have been completed.

For a complete list of City of Antigo Park Policies, Rules and Procedures please visit our website:
www.antigo-city.org