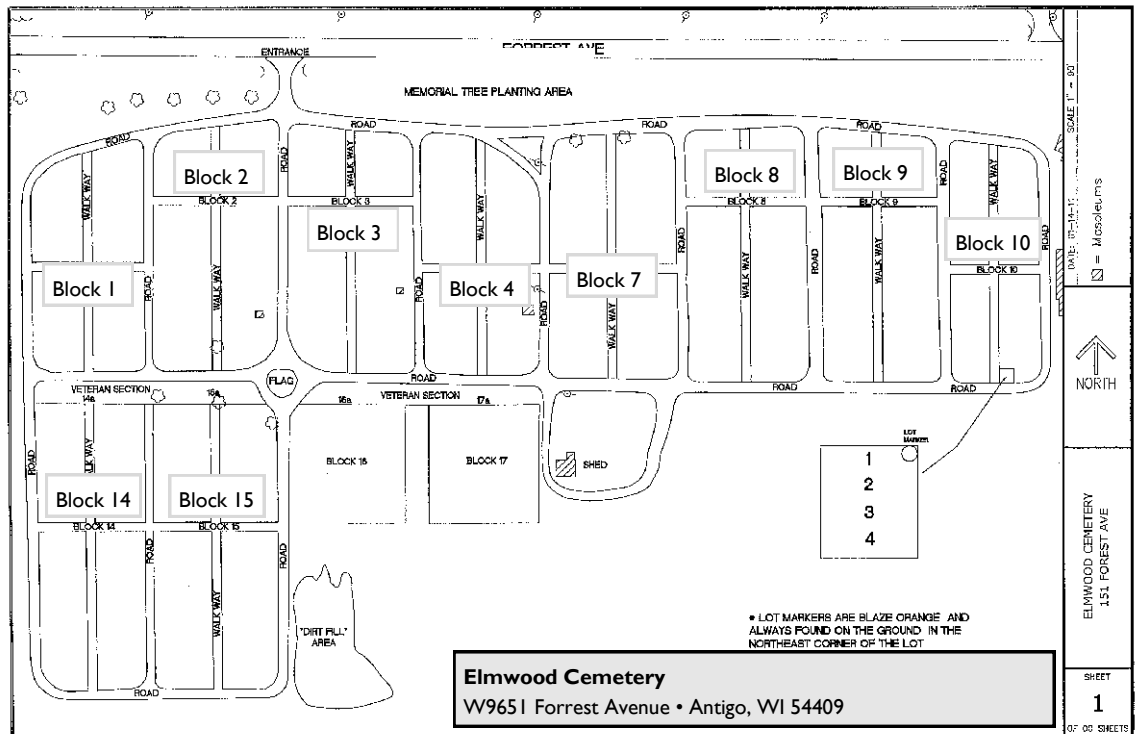
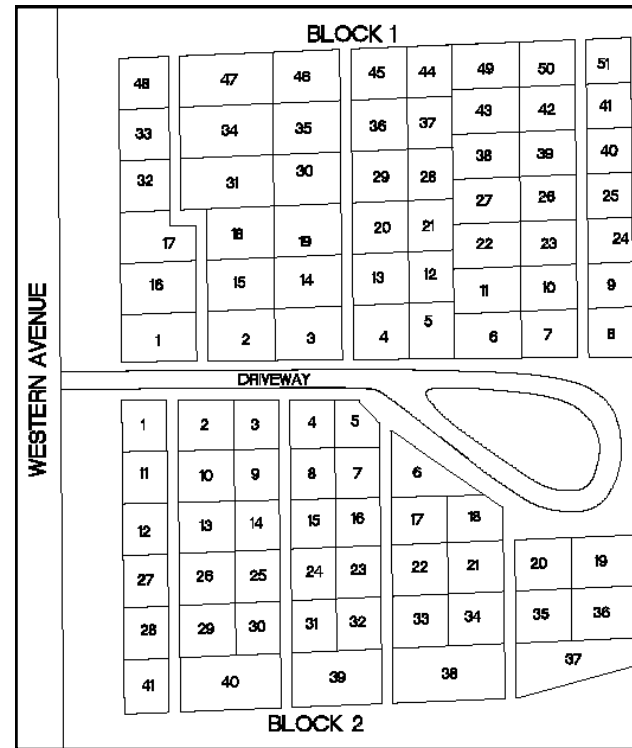


**Bohemia Cemetery**  
409 South Western Avenue  
Antigo, WI 54409



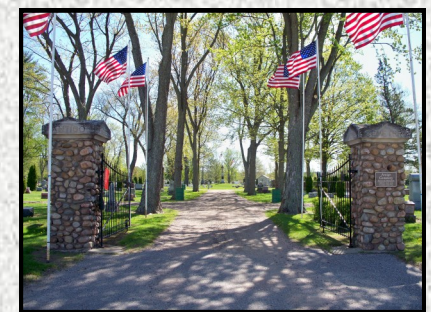
**Antigo**  
"Antigo Area on the go"

**City of Antigo Cemetery Department**  
700 Edison Street  
Antigo, WI 54409

Phone: 715.623.3633 extension-131 /154  
Fax: 715.627.7099  
E-mail: srepp@antigo-city.org  
www.antigo-city.org



*Municipal Cemetery*  
Information  
*Antigo*  
*Bohemia*  
*Elmwood*



[www.antigo-city.org](http://www.antigo-city.org)

## General Municipal Cemetery Information and Policies

### Cemetery Office:

700 Edison Street, Antigo, WI 54409  
715.623.3633 extension-131

### Hours:

Office: Monday - Thursday, 8:30am - 4:30pm  
Grounds/Maintenance: Monday - Friday, 7am - 3pm

### Scheduling a Burial

Burial arrangements should reach the Cemetery Department at least one business day before the time of scheduled interment for a summer burial Tuesday through Friday. The Cemetery Department must receive at least two business days notice for a Saturday, Monday, or Winter Burial. This allows staff adequate time to prepare the grave site. Without proper notice the Cemetery Department cannot guarantee site preparation.

### Overtime Rates

Overtime rates will apply if grave preparation is required beyond normal business hours: (Monday - Friday, 8:30am - 3:00pm).

Weekday burials scheduled after 1:30pm will be charged the overtime rate.

### Holidays

No burials will be made on Sunday, declared City Holiday, or Legal Holiday except as may be required by the Board of Health, and the charges for opening and closing of the grave shall be two and a half times the Monday - Friday rate and will only be scheduled if staff is available.

### Transferring of Lots or Spaces:

No person will be recognized as owner or part owner of a lot unless his or her name appears in the records or on a deed.

In the event of the death of a lot owner, an affidavit must be signed and filed by all the heirs (authorized to sign orders for interments) to give directions regarding the use of the lot(s) or space(s). The affidavit must be notarized.

Blank Affidavits are available at the Cemetery Office.

## Cemetery Price List

### Spaces

|  |          |
|--|----------|
| Full Size Space .....                                | \$800.00 |
| Restricted and Cremation Sections .....              | \$400.00 |
| Cremation Space in Monument .....                    | \$245.00 |
| *Veteran Space .....                                 | \$400.00 |
| <i>(only applies to designated veteran sections)</i> |          |

|   |          |
|---|----------|
| Baby / Child Space .....                      | \$400.00 |
| Baby / Child Space Restricted Sections .....  | \$360.00 |
| <i>*Baby / Child Spaces are 1'-3" x 3'-5"</i> |          |

### Burial Rates

|                                     |            |
|-------------------------------------|------------|
| Full Burial (Monday - Friday) ..... | \$920.00   |
| Full Burial (Overtime) .....        | \$1,030.00 |
| <hr/>                               |            |
| Cremation (Monday - Friday) .....   | \$460.00   |
| Cremation (Overtime) .....          | \$515.00   |

|   |          |
|---|----------|
| *Veteran Burial (Monday - Friday) ..... | \$460.00 |
| *Veteran Burial (Overtime) .....        | \$515.00 |

|  |          |
|--|----------|
| *Veteran Cremation (Monday - Friday) .....           | \$230.00 |
| *Veteran Cremation (Overtime) .....                  | \$260.00 |
| <i>(only applies to designated veteran sections)</i> |          |

|   |          |
|---|----------|
| Baby / Child Burial (Monday - Friday) ..... | \$460.00 |
| Baby / Child Burial (Overtime) .....        | \$515.00 |

|  |          |
|--|----------|
| Baby / Child Cremation (Monday - Friday) ..... | \$230.00 |
| Baby / Child Cremation (Overtime) .....        | \$260.00 |

### Monument Staking: \$50.00

**Disinterment: \$1,840.00** (appropriate paperwork must be filed prior to any disinterment)

*\*Additional Charges will be assessed for pre-paid burials that require preparation or services outside of normally scheduled Grounds/Maintenance Hours.*

### Payment Information:

- \* Checks should be made out to the City of Antigo
- \* All charges must be paid in full.
- \* Payment must be received prior to any grave opening.

### Restricted Sections and Designated Cremation Sections

Restricted and Cremation Sections are only authorized to have one flush marker placed with a cement collar. Flowers, trees and shrubs are not authorized.

- \* The designated Cremation Section is: Block 2, Section "A" and Block 3, Section "A".
- \* Cremation Section Lot sizes are 36" x 36" with only one cremation per space authorized.
- \* Please check with the Cemetery Department for Restricted Section location information.

*Complete policies, rules and cemetery ordinance is available upon request*

## Monument Information

All monuments will be staked by the City of Antigo Cemetery Department staff to ensure proper placement. The staking fee is \$50.00.

One upright monument is allowed if two spaces are owned and the spaces are side-by-side.

A total of two grave markers per grave site are allowed (this includes veteran markers attached to the back face of an upright monument).

A single space and Cremation Section spaces are only authorized a flush marker that is 24" x 12" with a cement collar not to exceed 30" x 20".

All flush markers are required to have a cement collar  
*\*Any variations need to be approved by the Cemetery Director*

|                              | 2-Space    | 3-Space | 4-Space   | 5-Space   |
|------------------------------|------------|---------|-----------|-----------|
| Max Length of Base and Stone | 40" or 48" | 48"-54" | Up to 52" | Up to 56" |
| Max Height of Base and Stone | 26"        | 26"     | 26"       | 26"       |
| Max Width of Base and Stone  | 14"        | 14"     | 14"       | 14"       |
| Max Stone Thickness          | 8"         | 8"      | 8"        | 8"        |



## Flowers, Memorials and Plantings

### Arbovitae

No new arbovitae shrubs are allowed to be planted in any of the three City owned cemeteries as of January 1, 2012. Memorial trees planted in designated cemetery or park areas will be considered instead of the arbovitae. Please contact the Cemetery Office for additional information.

All arbovitae shrubs which are deemed overgrown will be removed at the Cemetery Director's Discretion.

### Temporary Flower Arrangements

Temporary flower arrangements are allowed, but must be firmly attached to upright monuments, placed on a shepherd's hook, or placed on an authorized concrete pad in front of the marker. If arrangements appear to be abandoned or unkempt they will be removed.

- \* Summer flower arrangements or annual plantings must be removed by the month of October. The Cemetery Department will remove flower arrangements after this time.
- \* Fall and winter arrangements may be attached to the marker or hung from a shepherd's hook after October 1st.

### Annual or Perennial Flower Plantings

The planting of annual or perennial flowers is allowed at grave sites. The foliage may not exceed a one-foot planting area from the front of the base of the marker or monument. There must be a mulch perimeter of at least one foot from the base of the planted flowers. The mulch is not to exceed the width of the marker.

### Memorials or Gifts

Small memorials or gifts placed at the grave site must be on the marker proper, or on a concrete pad. The concrete pad cannot exceed the width of the marker or monument, and must be placed directly in front of the monument or marker - not to exceed two feet.

The City of Antigo is not responsible for any damage to lots or structures thereon, or for flowers or articles removed from any grave or lot. Any damage or loss should be reported to the Director.